

Monoclonal Datasheet

JHU-6 Rabbit Monoclonal Ab Custom Project

Overview

Project name	JHU-6
Clone ID	9-7
Specificity	MT-9
Tested applications	ELISA
Positive control	N/A
General notes	Protein A purified monoclonal antibody

Properties

Form	Liquid
Storage instructions	Shipped on blue ice. Upon delivery, aliquot and store at -20°C. Avoid freeze / thaw cycles.
Buffer	Sterile PBS, pH 7.4
Clonality	Monoclonal
Concentration	1.39mg/ml
Volume	2 x 3.6ml
Lot number	H08221902

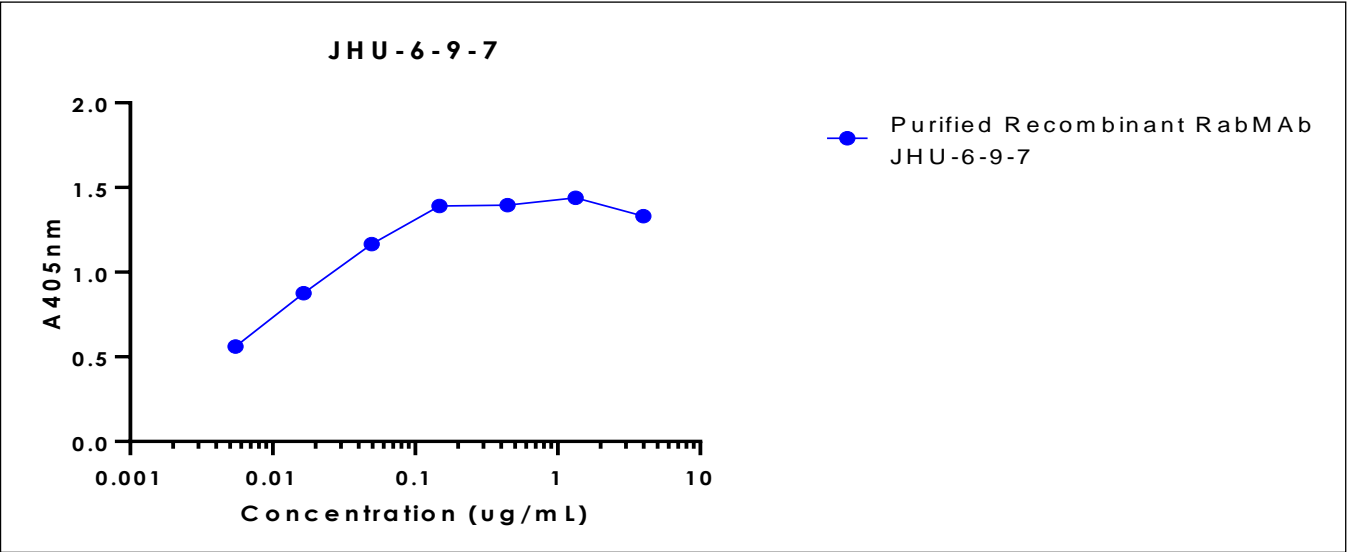
ELISA Information

Brief protocol	Antigen is coated overnight at 4°C. Samples are added in serial dilutions starting at 1/250 (supernatant and flow-through) or 4 µg/ml (purified antibody) and incubated at room temperature for 1.5 hours. Alkaline phosphatase-conjugated secondary antibody is added at room temperature for 1 hour. Substrate solution is added and developed for 15 minutes at room temperature. Absorbance is measured at 405 nm. Data on the graph represents the average of repetitions (rep) 1 and 2 for each sample.
Antigen(s)	MT-9

Monoclonal Datasheet

JHU-6 Rabbit Monoclonal Ab Custom Project

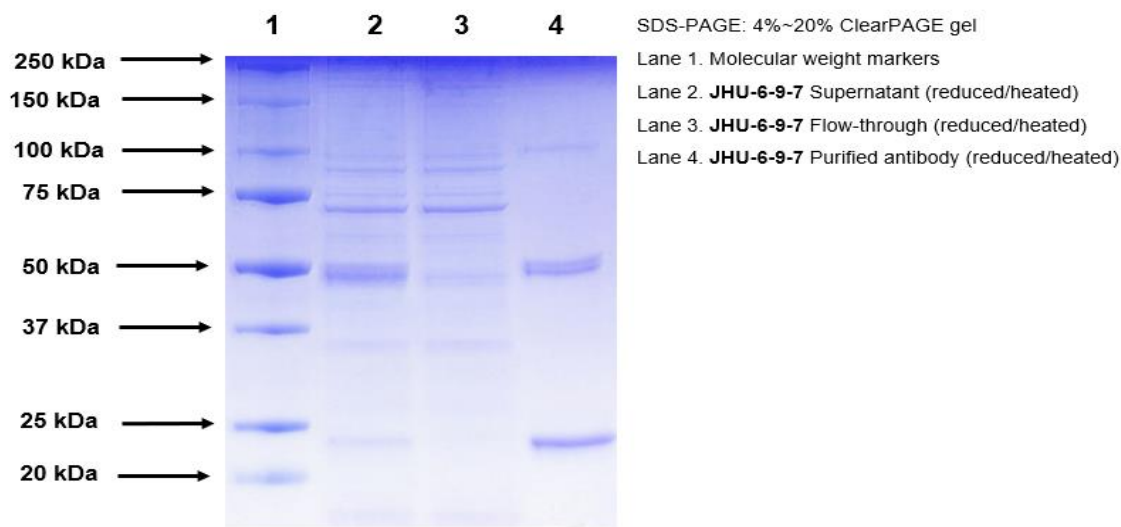
ELISA Data



Monoclonal Datasheet

JHU-6 Rabbit Monoclonal Ab Custom Project

SDS-PAGE



Terms and Conditions

All products are for research use only and are not intended for diagnostic or therapeutic use or consumption by humans or animals. Additionally, all products are sold subject to the terms and conditions referred to in the sales quote.